

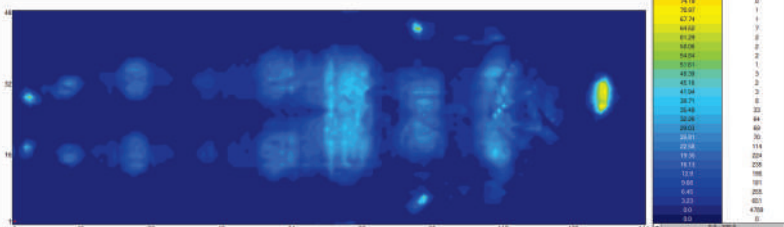
Very High Risk Smart Dynamic Mattress

دارای پروانه ساخت از اداره کل تجهیزات پزشکی

PL-8900



شاخص (Pressure Relieving Index) PRI



MATTRESS Specifications

(Replacement)

Dimension	(L)80"x (W)36"x (H)8" (L)203cm x (W)91.4 cm x (H)20.3cm
Cell Number	20 Cells
Full Replacement	3 cells Pillow/17 cells two chamber Micro Low Air Loss
Cell Material	TPU
Cover Material	Two-way stretch PU
Safe Load Working	Up to 220 KGS
CPR Time	Less Than 30 Secend



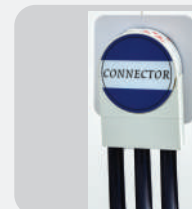
PUMP

Specifications

Dimension:	(L)11.4"x (W)12.4"x (H)6" (L)29cm x (W)31 cm x (H)15cm
Weight	3.4KGS
Power Supply	AC 120V,60Hz(for 120V system) AC 230V,50Hz/60Hz(for 230V system)
Pressure Range	Adjustable 10 level (30~60mmhg)
Cycle Time Variable	10,15,20,25 mins
Noise	Less Than 30 db

Features:

- Low pressure indication , Alternating/Static option , Auto Firm inflation
- Panel lock function , Power failure alert
- Low pressure alert



► Patented Quick Connector