

# PRESSURE MAPPING TESTING REPORT

**Model:** PL-8535



**Pressure setting:** 20mmHg 、 35mmHg 、 60mmHg

**Testing Equipment Brand:** XSENSOR

**Patient A :**  
Height **67.7"**  
Weight **150 lbs**



**Patient B :**  
Height **69.3"**  
Weight **176.40 lbs**

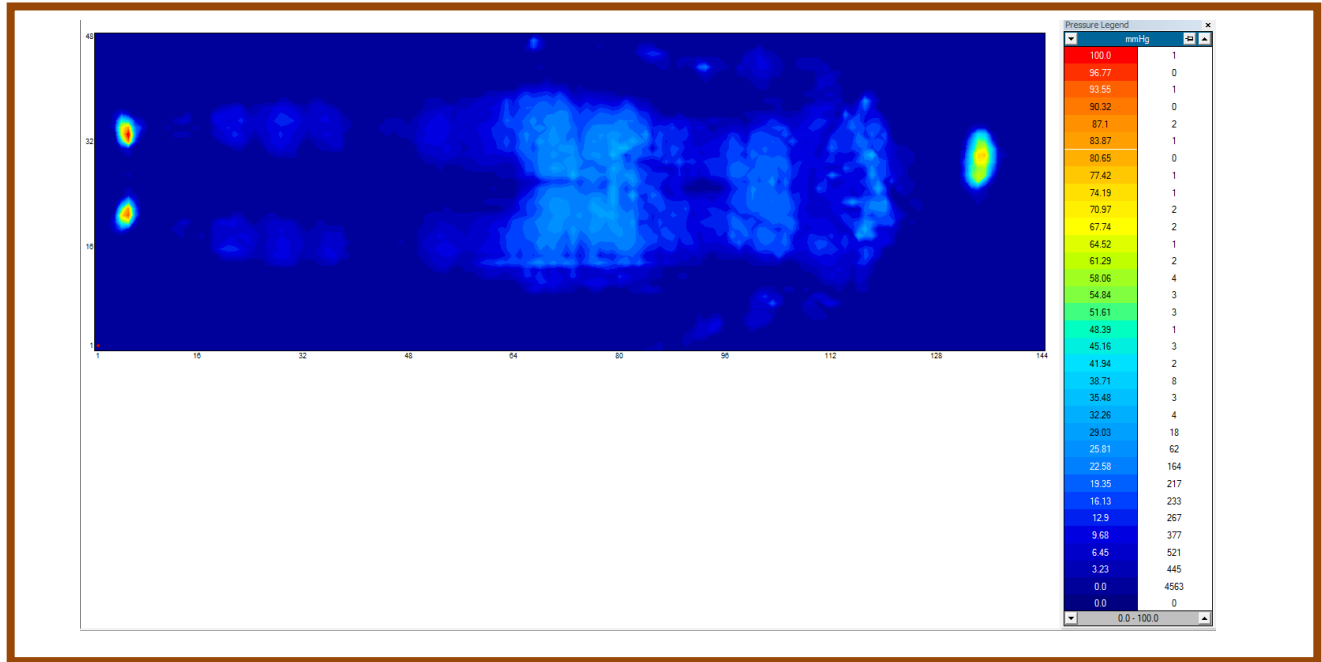


**Patient C :**  
Height **73.6"**  
Weight **286.60 lbs**

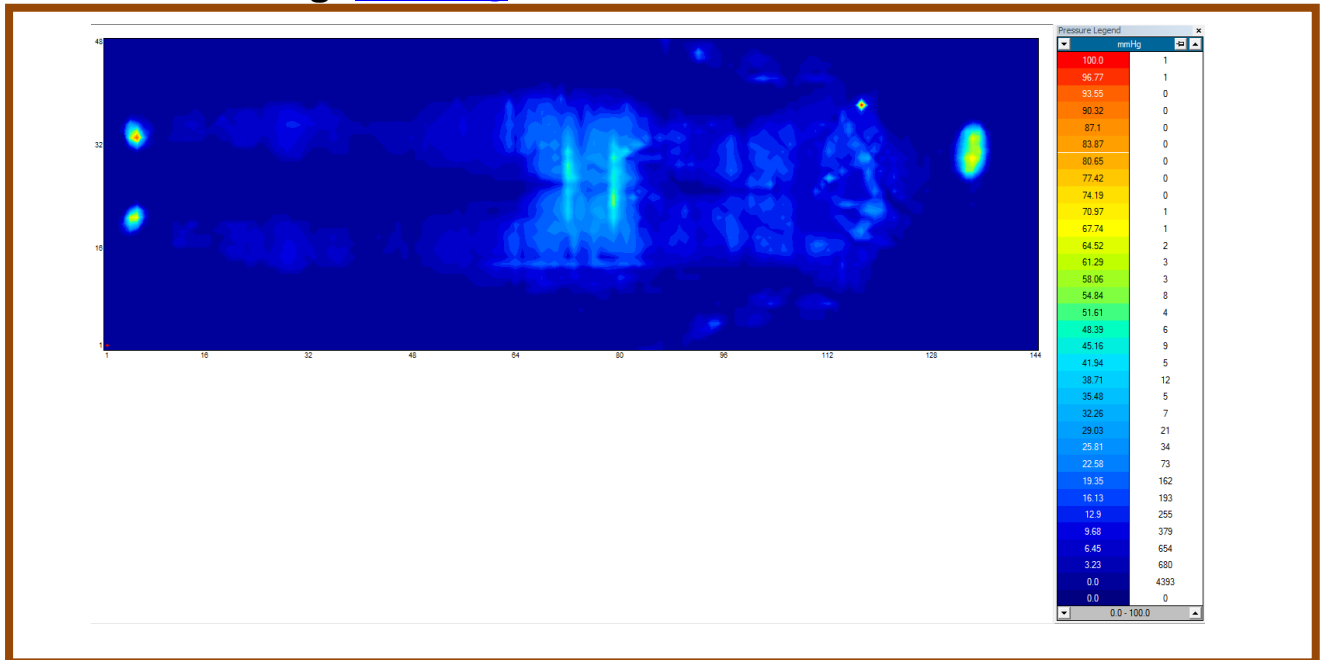


Patient **A** : Height **67.7"** Weight **150 lbs**  
Pressure setting: **20mmHg**

Inflate A tube; deflate B tube

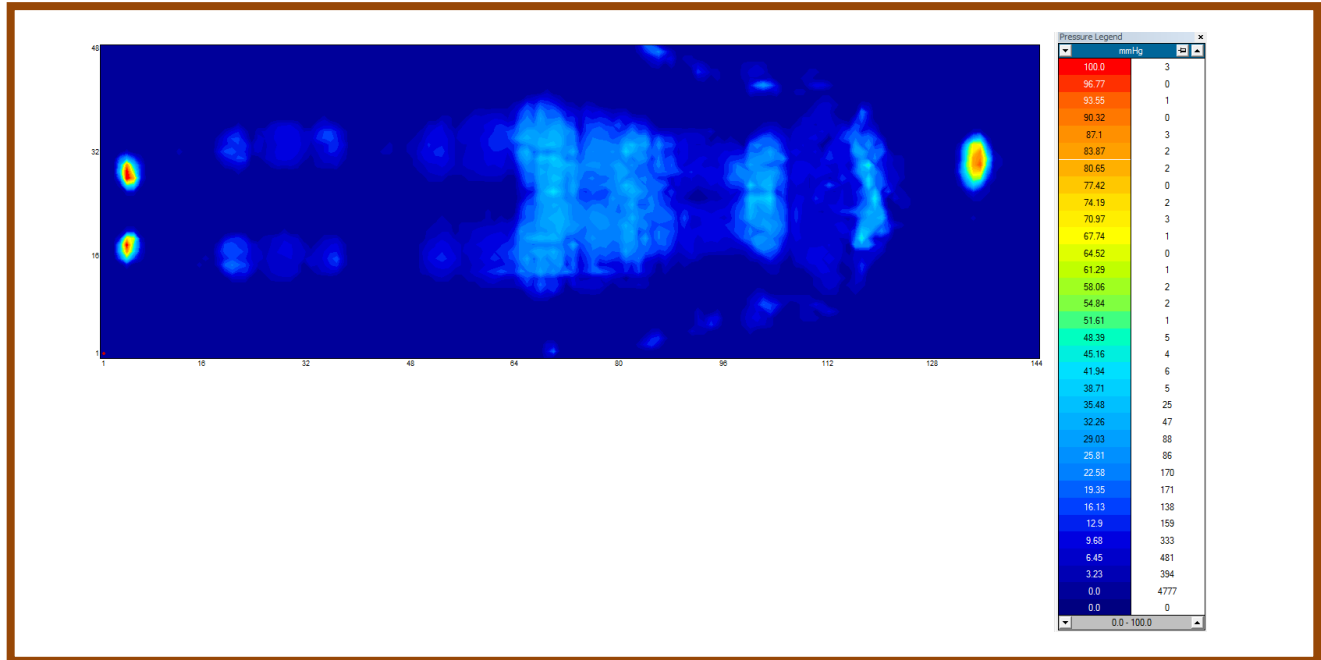


Inflate B tube; deflate A tube  
Pressure setting: **20mmHg**

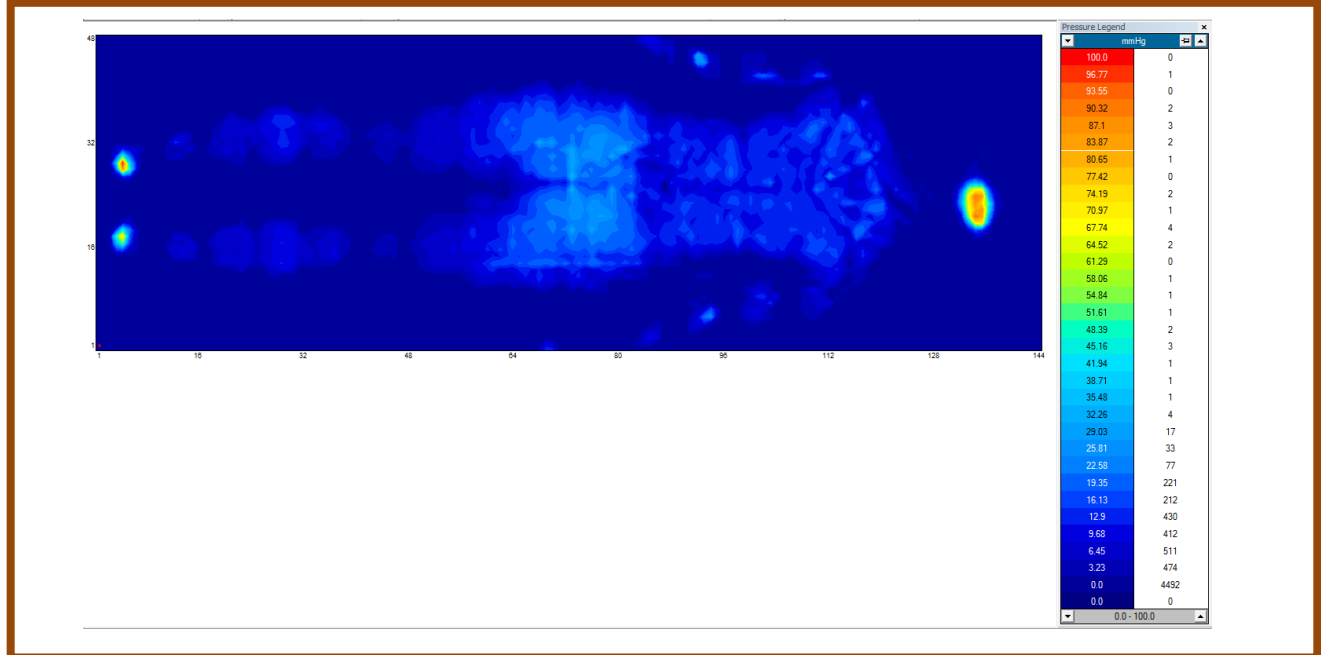


Patient **A** : Height **67.7"** Weight **150 lbs**  
Pressure setting: **35mmHg**

**Inflate A tube; deflate B tube**

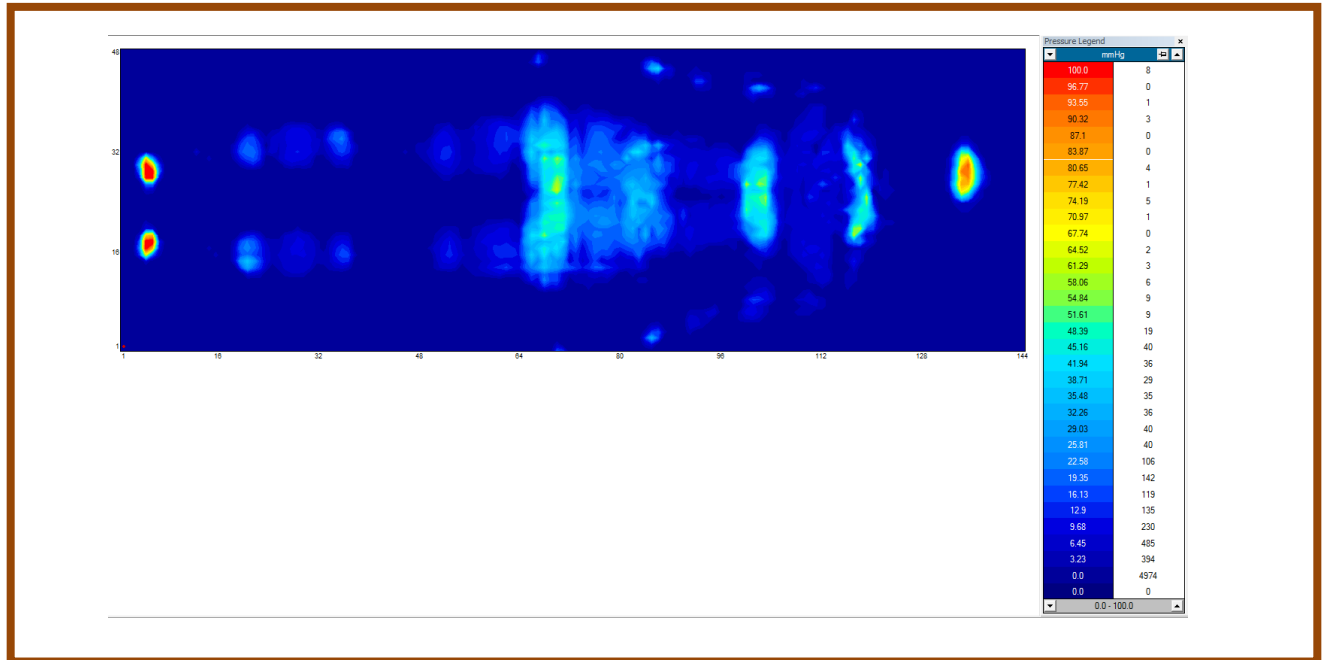


**Inflate B tube; deflate A tube**

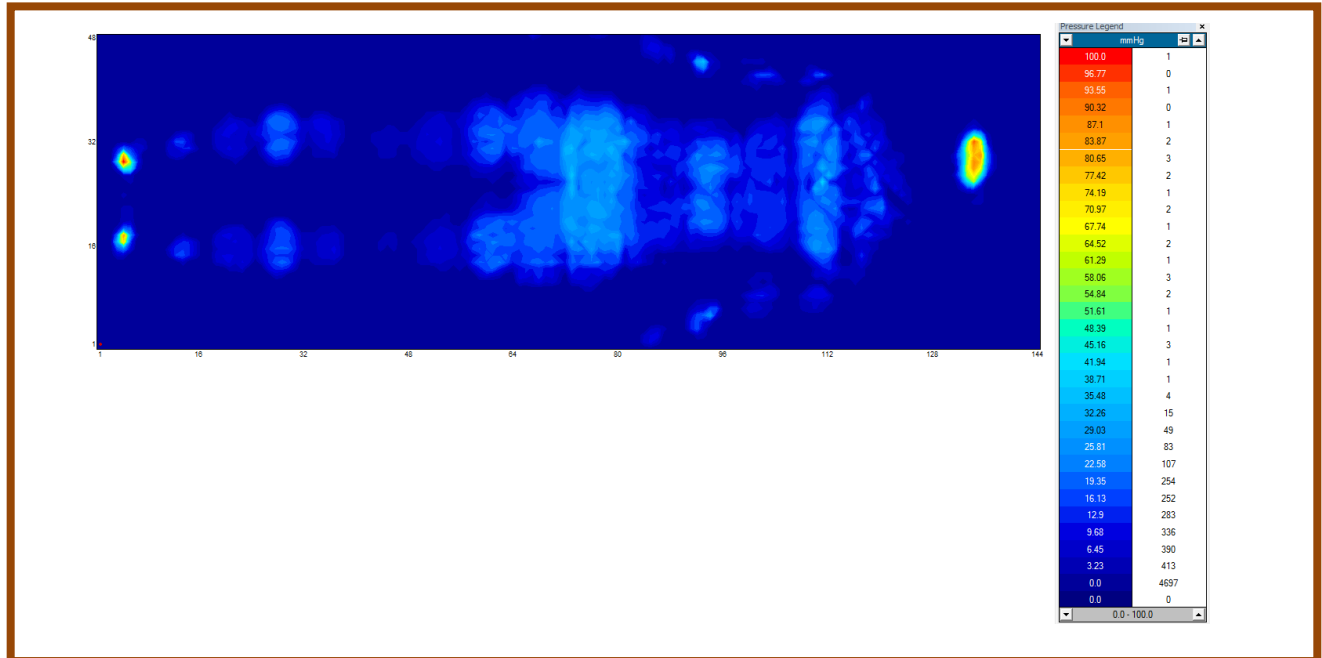


Patient **A** : Height **67.7"** Weight **150 lbs**  
Pressure setting: **60mmHg**

Inflate A tube; deflate B tube

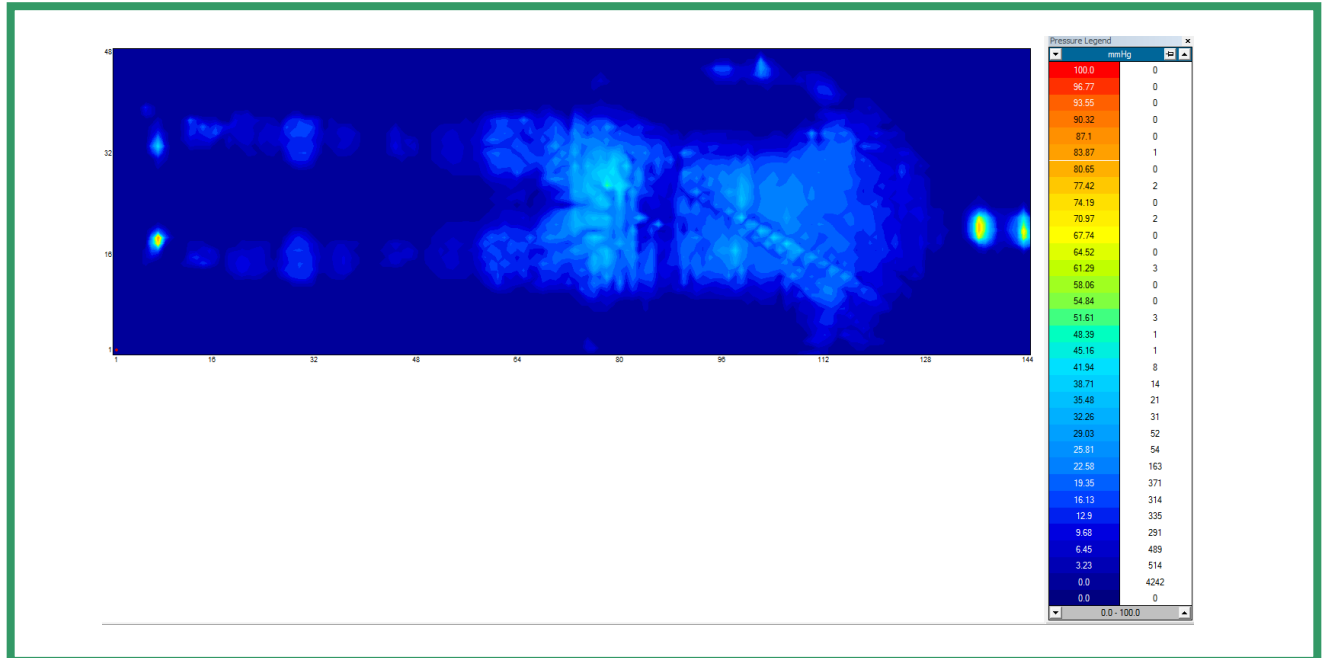


Inflate B tube; deflate A tube

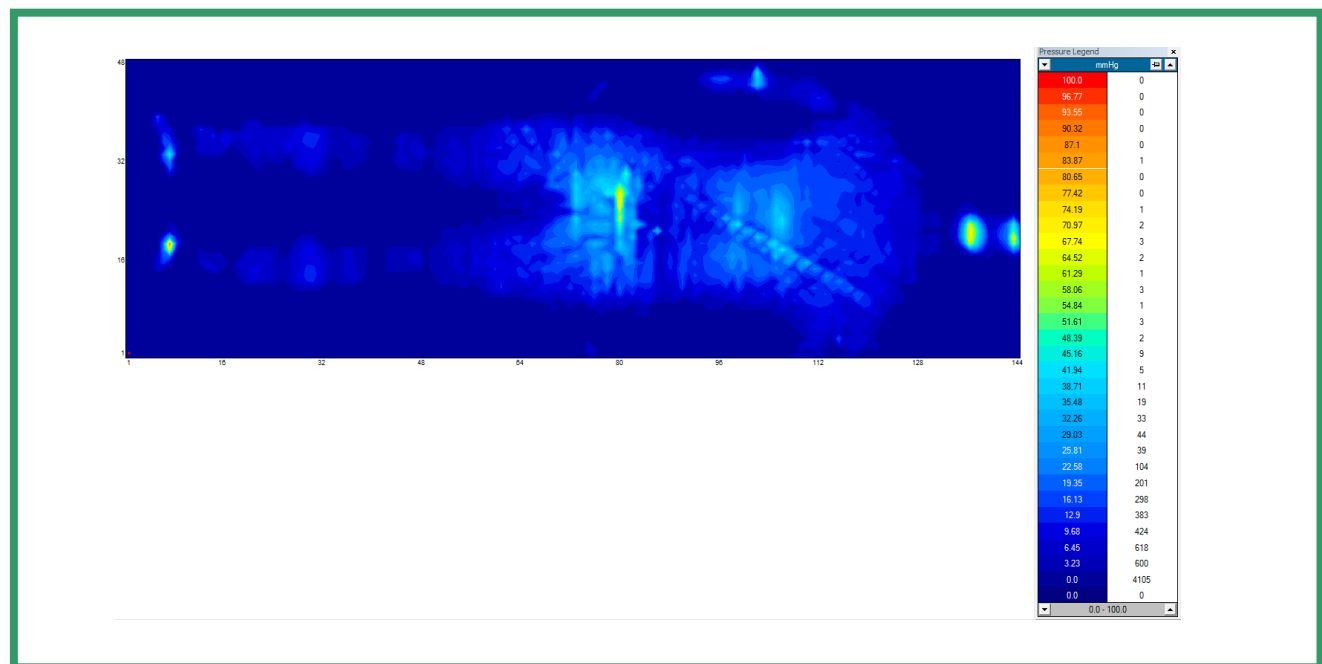


**Patient B:** Height **69.3"** Weight **176.40 lbs**  
**Pressure setting:** 20mmHg

**Inflate A tube; deflate B tube**

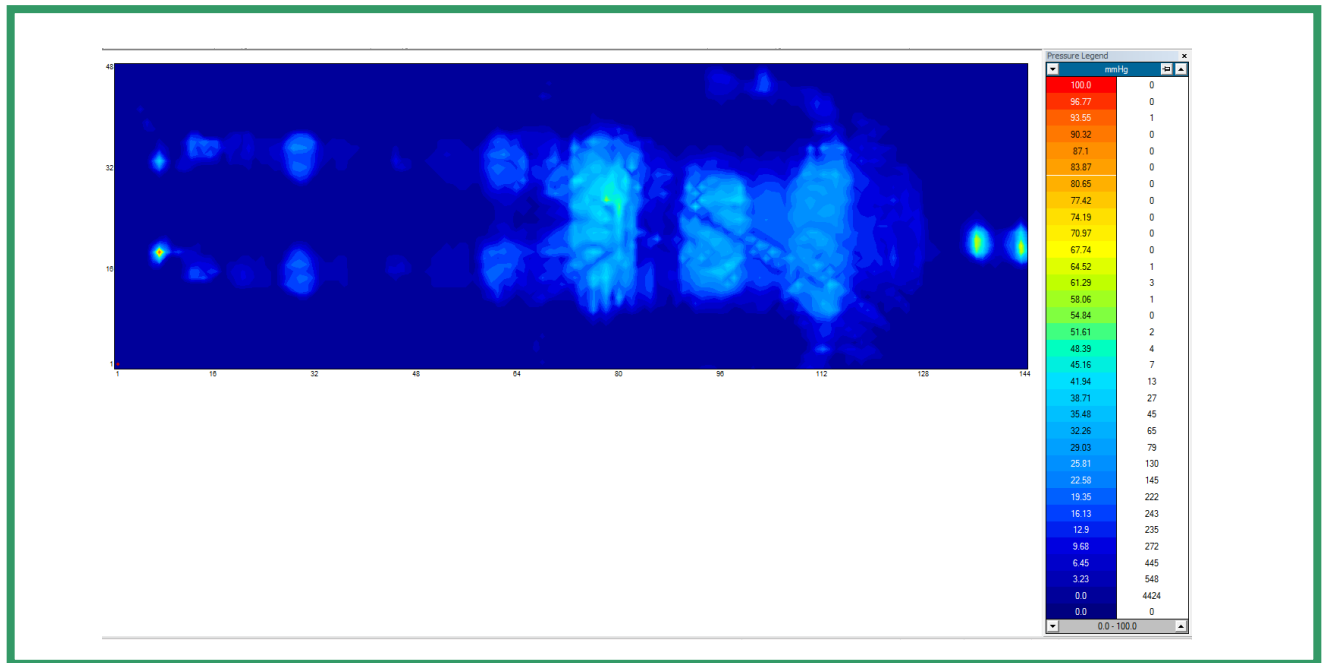


**Inflate B tube; deflate A tube**  
**Pressure setting:** 20mmHg

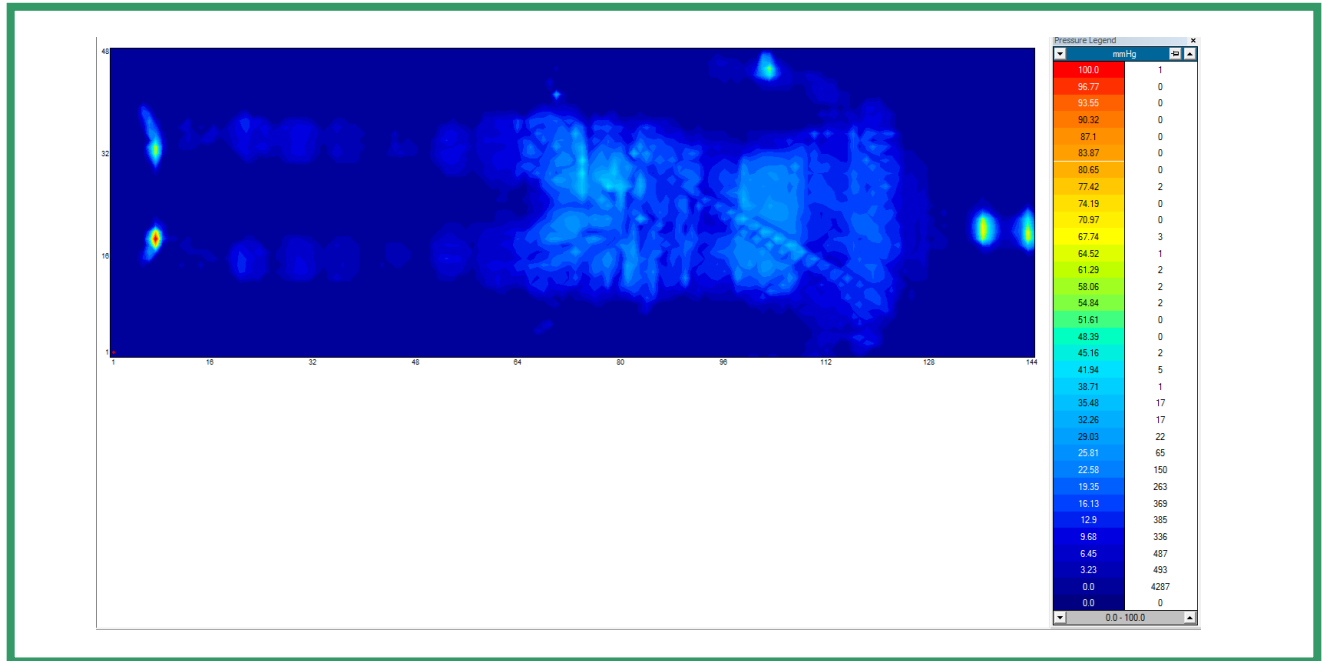


**Patient B:** Height **69.3"** Weight **176.40 lbs**  
Pressure setting: **35mmHg**

**Inflate A tube; deflate B tube**

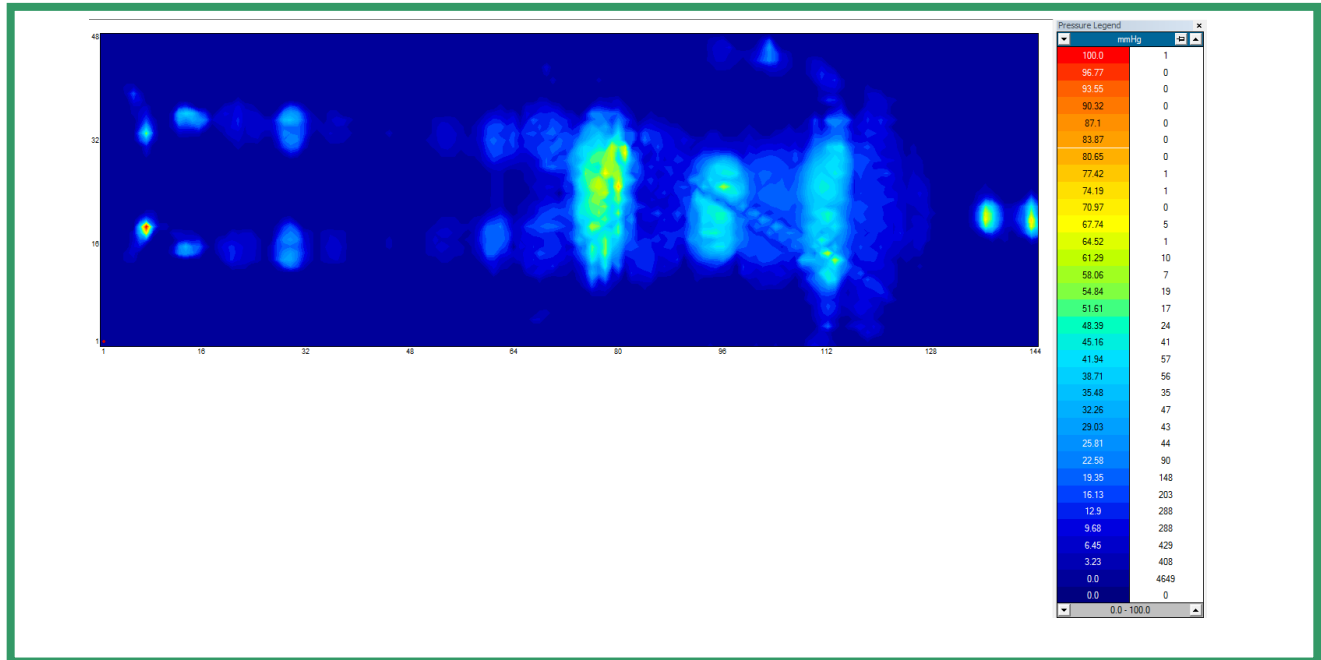


**Inflate B tube; deflate A tube**

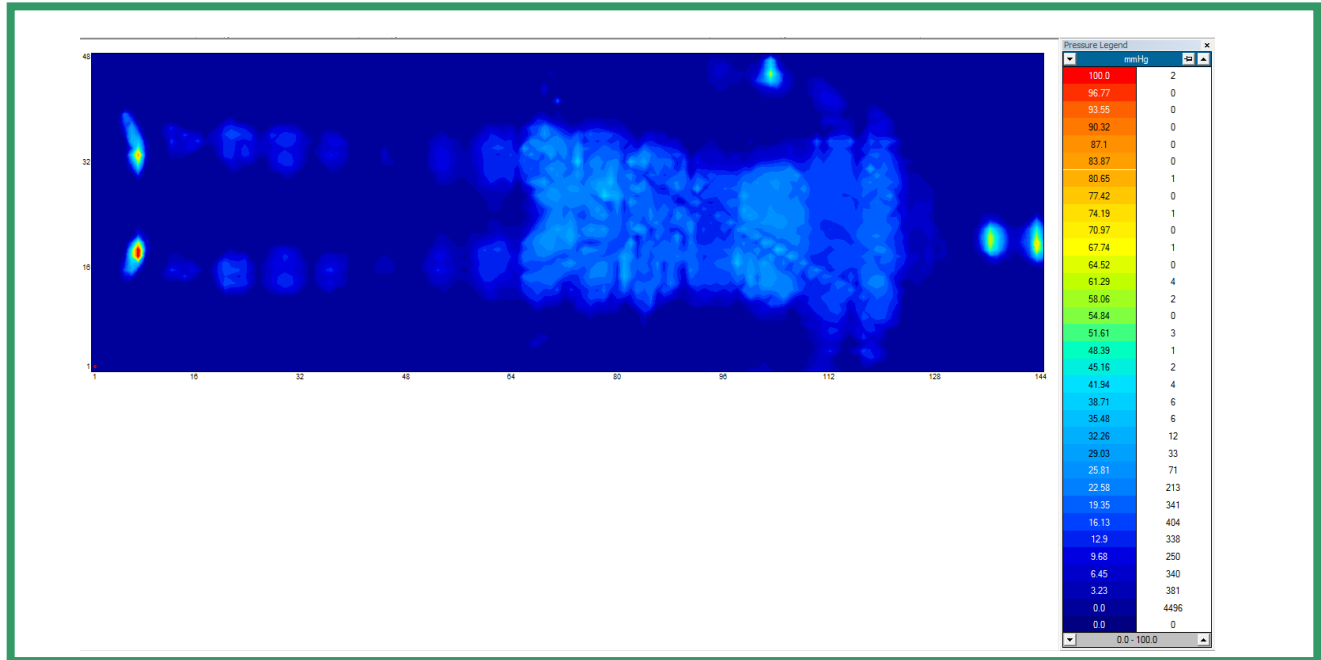


**Patient B:** Height **69.3"** Weight **176.40 lbs**  
**Pressure setting:** 60mmHg

**Inflate A tube; deflate B tube**

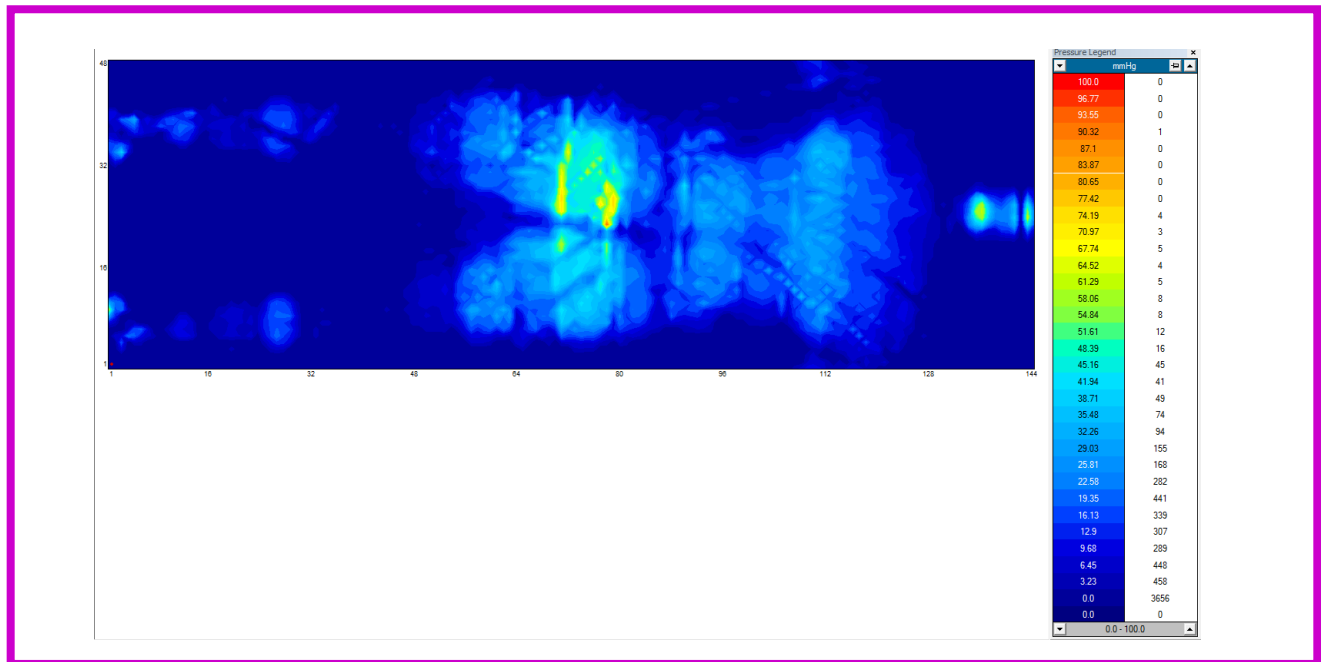


**Inflate B tube; deflate A tube**

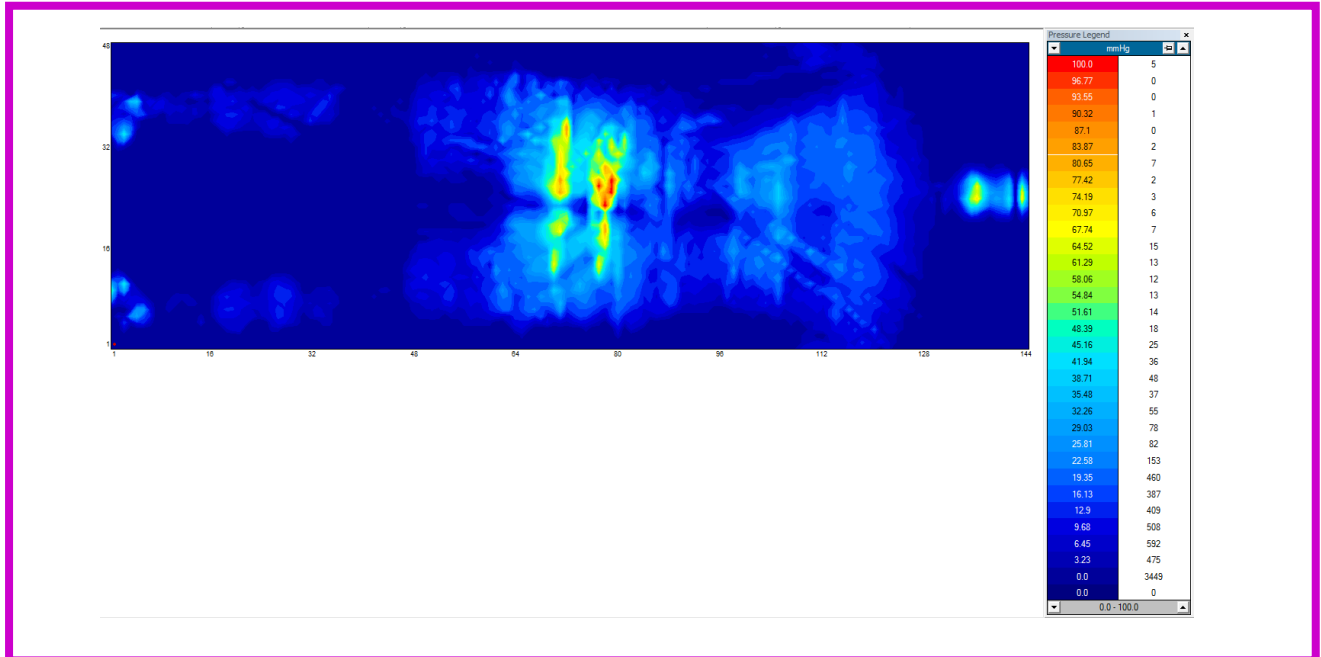


**Patient C:** Height **73.6"** Weight **286.60 lbs**  
**Pressure setting:** [20mmHg](#)

**Inflate A tube; deflate B tube**



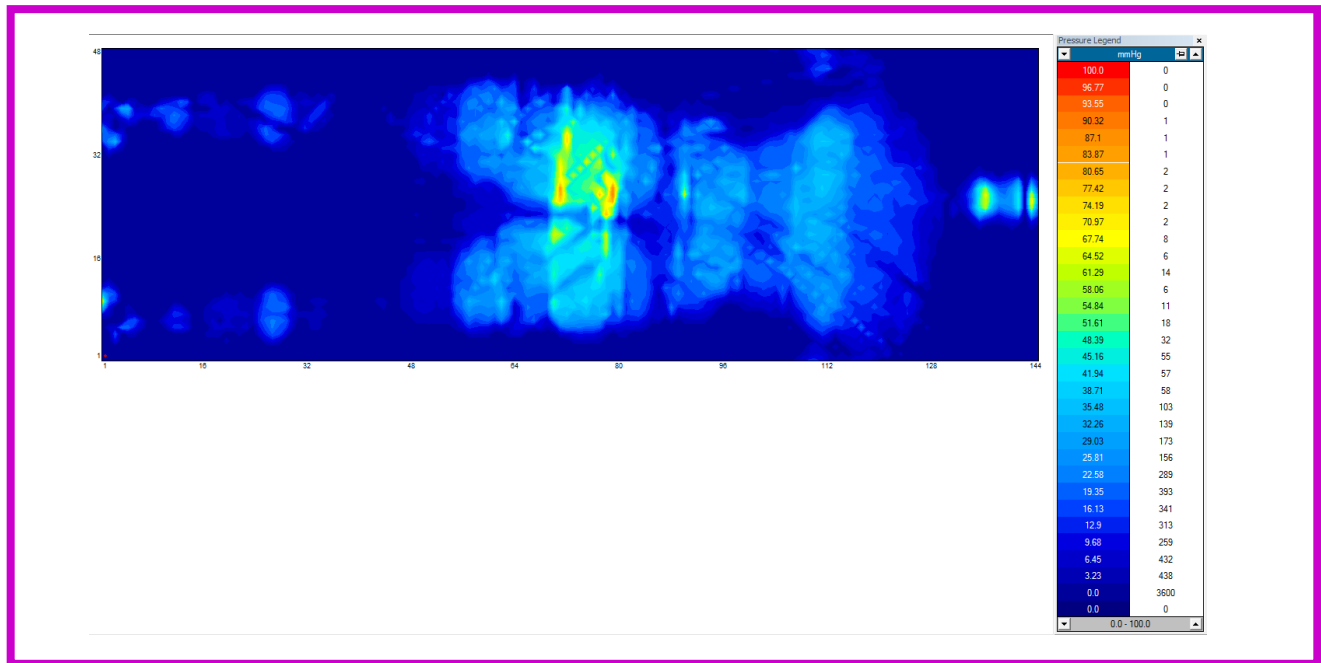
**Inflate B tube; deflate A tube**  
**Pressure setting:** [20mmHg](#)



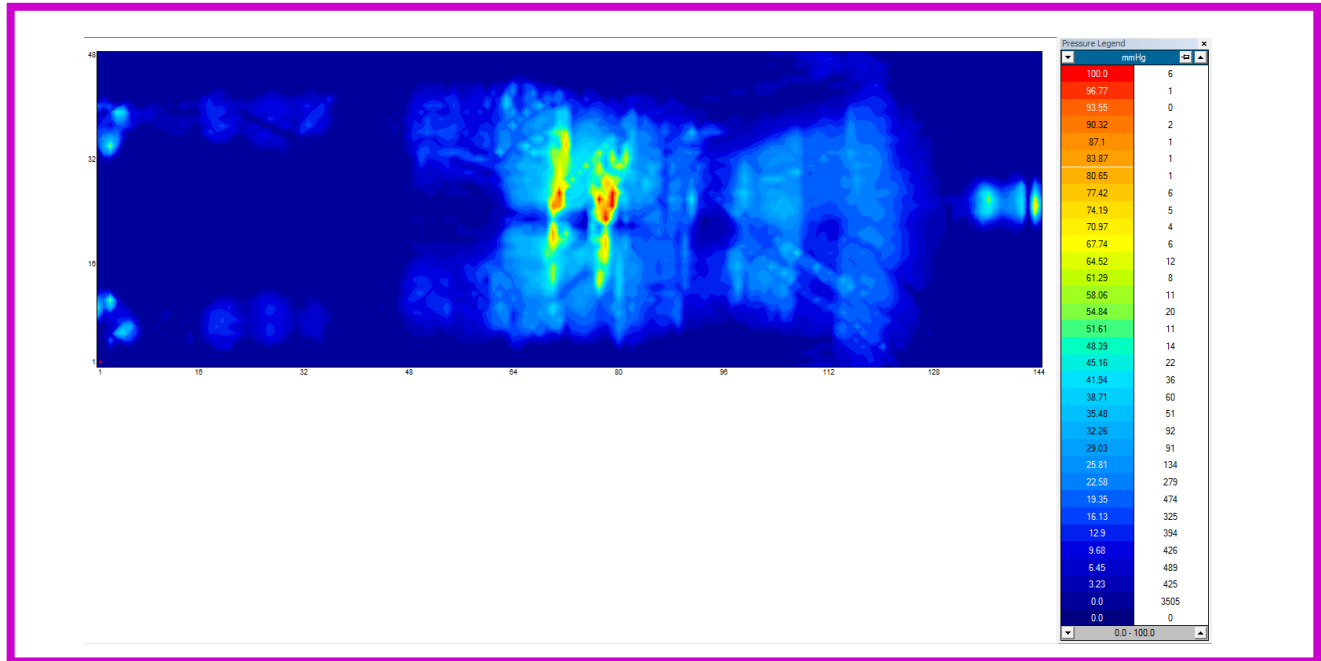


**Patient C** : Height **73.6"** Weight **286.60 lbs**  
Pressure setting: **35mmHg**

**Inflate A tube; deflate B tube**

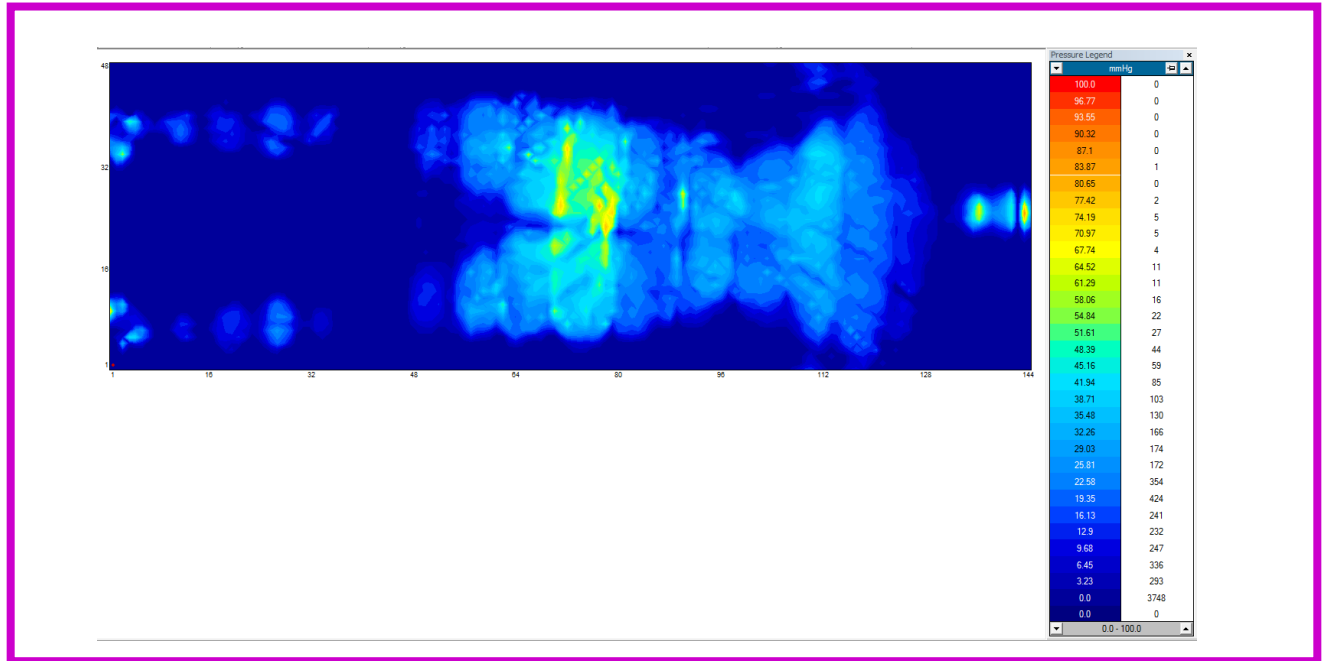


**Inflate B tube; deflate A tube**



**Patient C:** Height **73.6"** Weight **286.60 lbs**  
Pressure setting: **60mmHg**

**Inflate A tube; deflate B tube**



**Inflate B tube; deflate A tube**

